



EIRICH

QualiMaster AT1

A **testing instrument** for
automatic monitoring and control
of clay-bonded **molding sands**

Compactability Springback

Shear strength Deformability

Gas permeability



FOUNDRY

Successfully used for decades.

The **EIRICH measuring and control system QualiMaster AT1** ensures consistently high quality of the molding sand.

EIRICH, the **market leader** in **sand preparation**,

presents the new QualiMaster AT1

This **improved version** allows the **testing** of:

Compactability

Springback

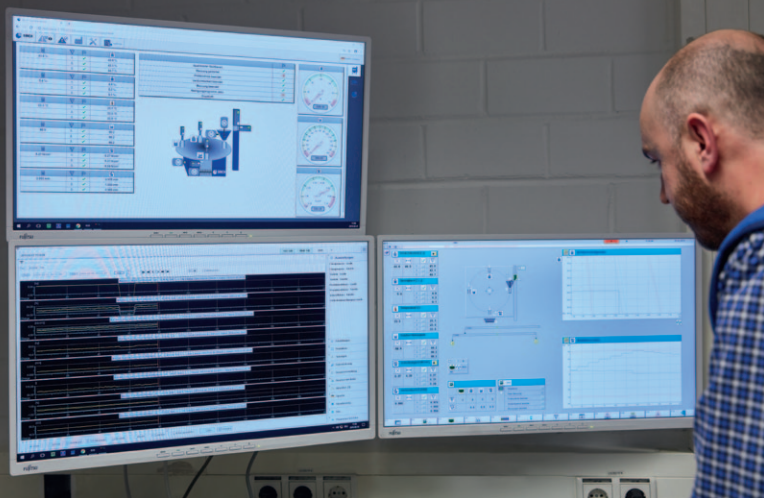
Shear strength

Deformability

Gas permeability

More features

- Up to 3 measurements per batch for each molding sand parameter
- Connection to existing control systems
- Stand-alone machine





In combination with the EIRICH software

SandReport

- Measured data acquisition
- Laboratory data entry
- Graphical evaluation
- Statistical evaluation

Additional features offered by the SandExpert

- Model catalogue (pattern plates)
- Recipe calculation
- Mold-related calculation of additives



EIRICH



For your local contact, please refer to:

www.eirich.com

Maschinenfabrik Gustav Eirich GmbH & Co KG

74736 Hardheim · Walldürner Straße 50 · Germany

Phone: +49 6283 51 0 · www.eirich.com · eirich@eirich.de