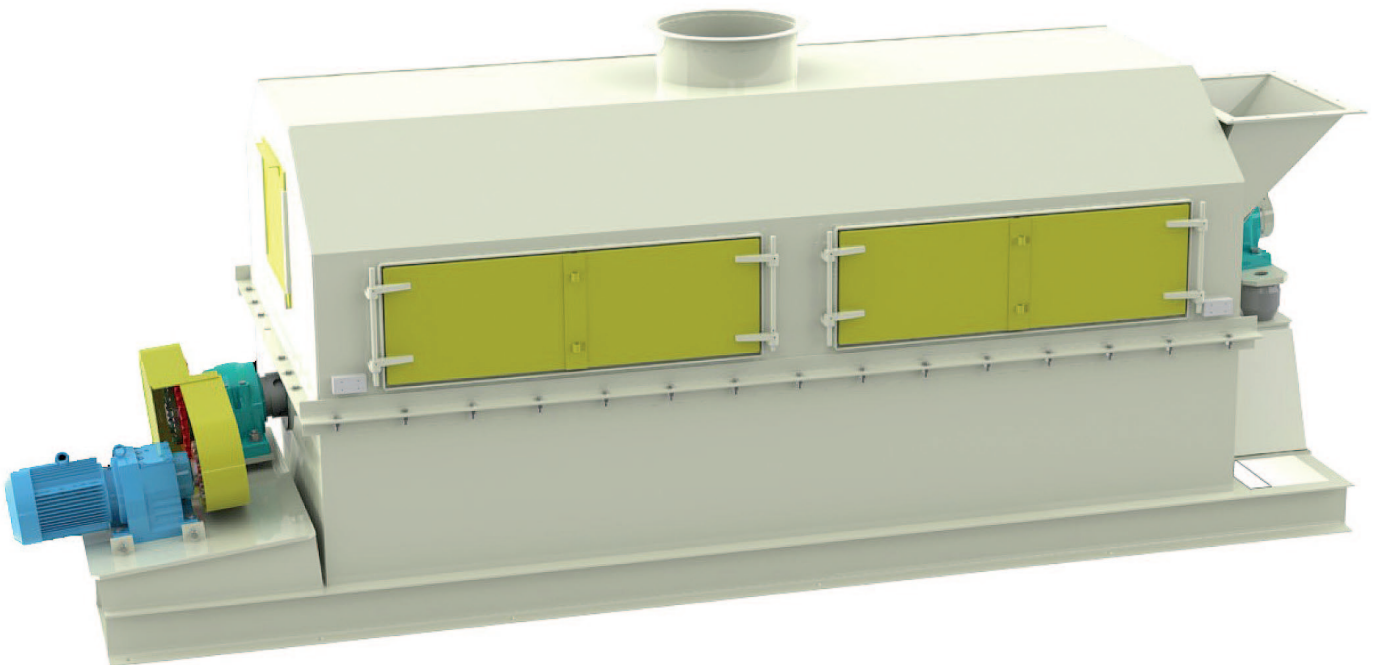


Polygonal screen S43

High throughput rate
Easy maintenance
Robust design



Polygonal screen S43

Application:

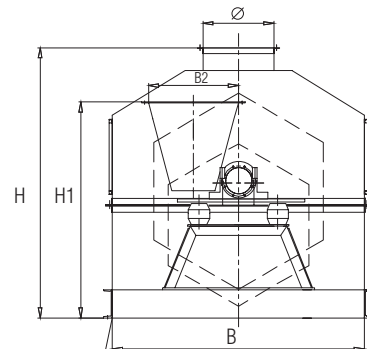
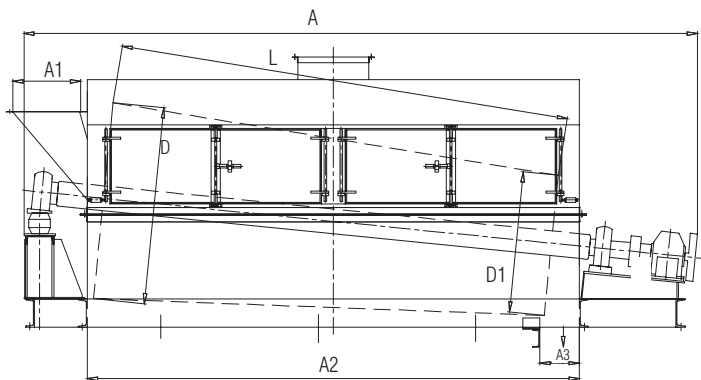
Effective screening of foundry sand.

Functions and features:

- Due to the inclined screening drum the molding sand is forwarded towards the drive motor. Return sand lumps, remaining core sand and impurities are discharged.
- An extraction opening is placed above the polygonal screen. Air is introduced into the screen through air inlet openings. During the screening process the air flows through the hot return sand. The return sand temperatures are reduced. Fines and hot air are carried to the dust extraction system.
- Standard mesh size 6 x 16 mm.
All impurities > 3.6 mm are reliably discharged.

Advantages:

- High screening capacities
- Stainless steel screen nettings, highly wear-resistant
- Screen nettings screwed to the screen frame, no leakages
- Torsion-resistant screen frame
- Special central shaft rotating in flexible bearings; quiet running
- Electrically heated inlet avoiding material adhesion
- Large inspection doors allowing easy access to the screen nettings for maintenance



Type	Capacity (t/h) 8x18	Capacity (t/h) 6x16	Exhaust air volume (m³/h)	Drive motor rating (kW)	Inlet diameter (D) (mm)	L (mm)
S4313	40 ~ 70	25 ~ 40	5000	5,5	1300	2585
S4315	70 ~ 100	40 ~ 70	8000	7,5	1500	3310
S4318	100 ~ 140	70 ~ 100	11000	11	1750	4000
S4321	140 ~ 200	100 ~ 140	14000	15	2100	4000
S4325	200 ~ 300	140 ~ 200	20000	22	2450	5000

Type	A	B	H	A1	A2	A3	Ø	B1	H1
S4313	4520	1700	1860	480	2880	250	450	620	1280
S4315	5350	1900	2082	480	3620	300	560	700	1650
S4318	6250	2240	2400	600	4380	350	630	800	1920
S4321	6650	2600	2650	700	4420	400	700	960	2180
S4325	7850	3000	3070	800	5480	450	800	1100	2450